



WRc Drainage Guidelines

Mike Boyes

THE CHARTERED INSTITUTE
OF LOSS ADJUSTERS



Why?

- Need for change
- Development of best practice
- Contractor performance
- Cost efficiency

THE CHARTERED INSTITUTE
OF LOSS ADJUSTERS



Who?

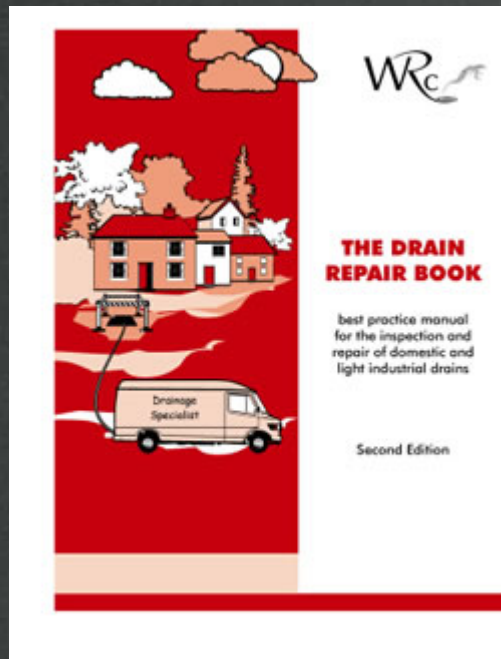
- Drainage Forum
- Collective recognition of scope to improve quality
improve effectiveness

THE CHARTERED INSTITUTE
OF LOSS ADJUSTERS



What?

- A best practice manual for the **inspection and repair** of domestic and light industrial drains.



THE CHARTERED INSTITUTE
OF LOSS ADJUSTERS



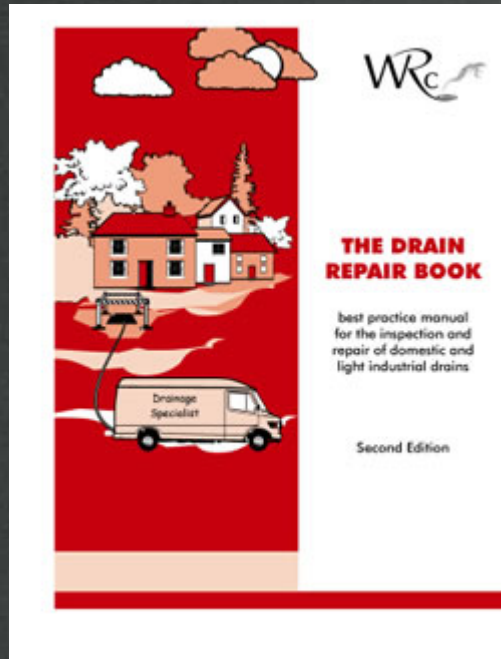
When?

Guide for those involved
inspection and repair work
75 to 250mm diameter
domestic and light industrial
drains

THE CHARTERED INSTITUTE
OF LOSS ADJUSTERS



How?



- Straightforward guidance and a clear specification.
- Correctly identify the need for any work
- Ensure that the most appropriate repair is selected.

THE CHARTERED INSTITUTE
OF LOSS ADJUSTERS



Practical Applications

- Reactive investigation?

or

- Subsidence Investigation?

THE CHARTERED INSTITUTE
OF LOSS ADJUSTERS

Assessing need for repairs



- Serviceability
- Structural Condition

THE CHARTERED INSTITUTE
OF LOSS ADJUSTERS



Why are Insurers paying?

- Because damage caused by an insured event

or

- Insurer has agreed to fund as part of repair solution

THE CHARTERED INSTITUTE
OF LOSS ADJUSTERS



Serviceability test

- Drain failing to discharge normal household flows to the sewer system?
- Evidence of leakage occurring (infiltration or exfiltration)?
- Intermittent storm-water flooding?
- Existing roots or future root growth likely to lead to continuing blockages?
- Leakage test failed?
- Defects make the drain unserviceable?

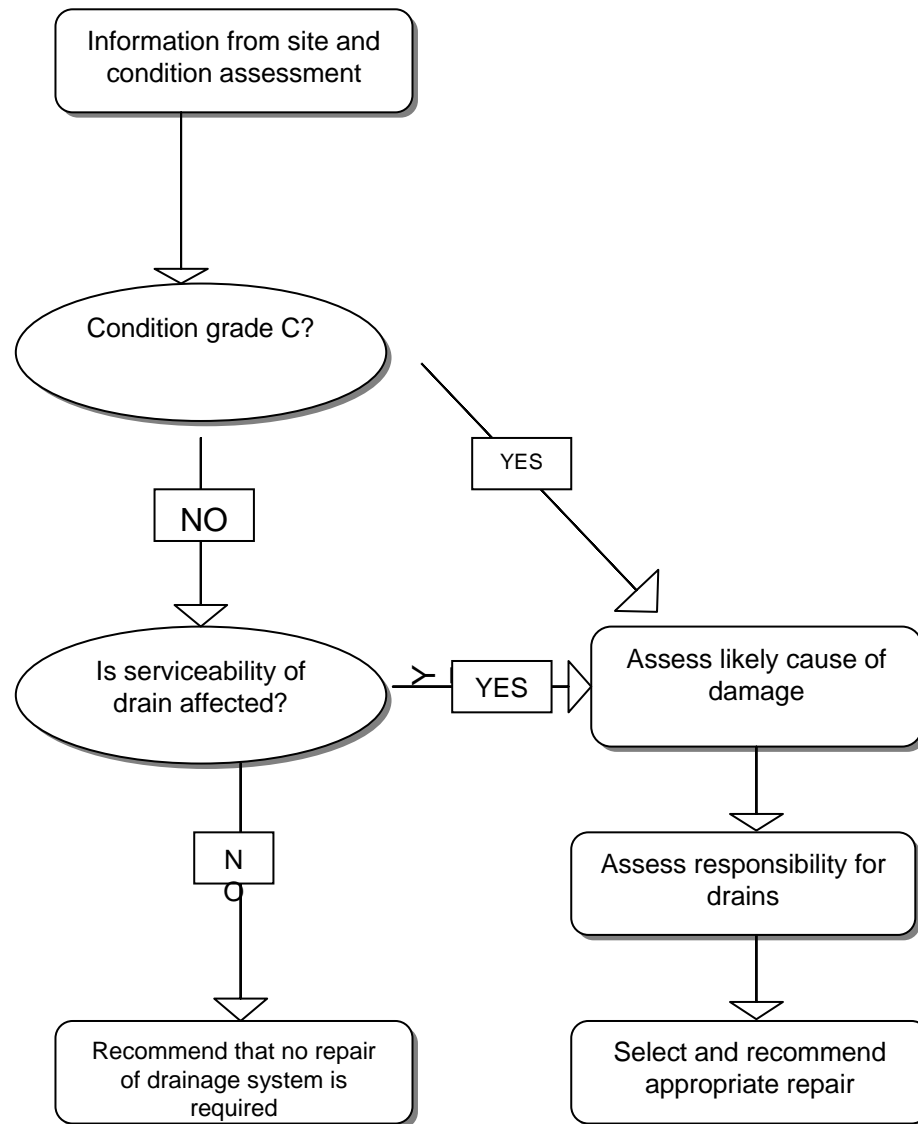
THE CHARTERED INSTITUTE
OF LOSS ADJUSTERS



Condition Grade

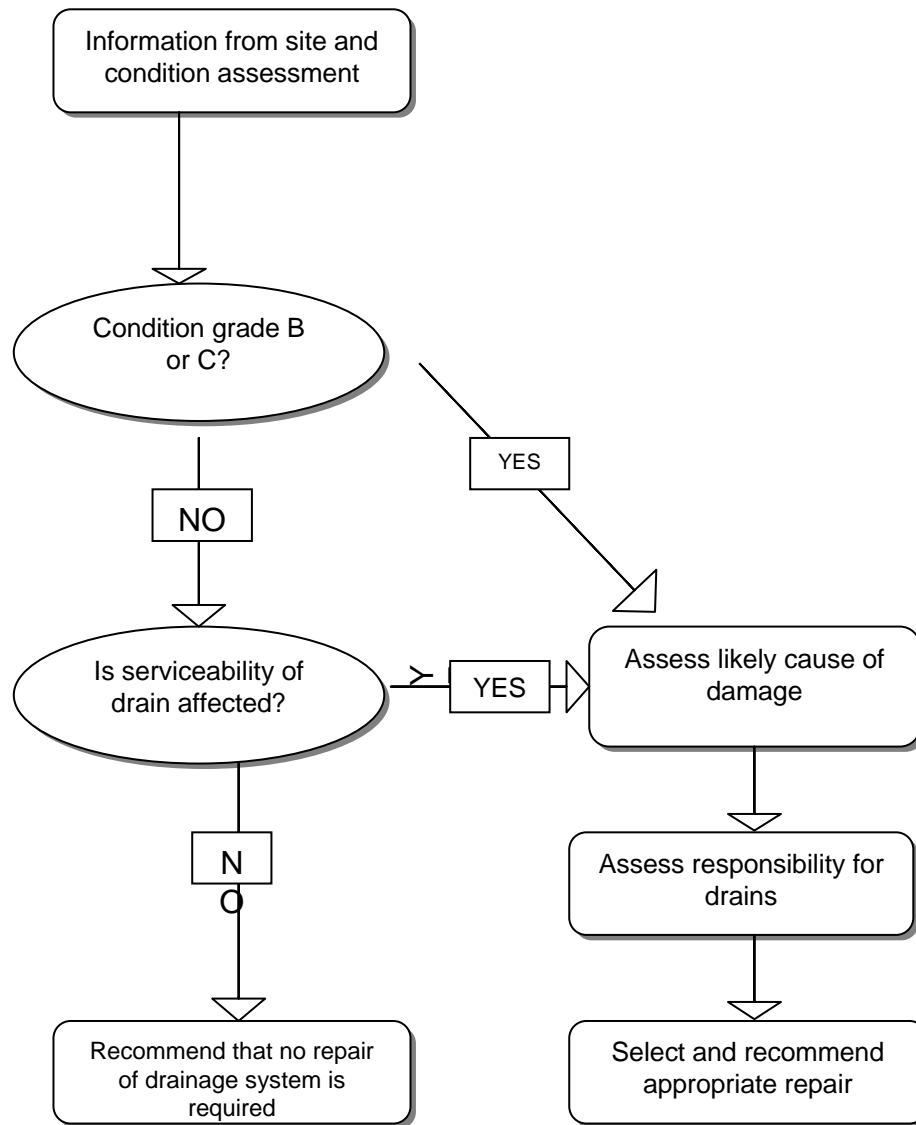
| Condition Grade | Structural Condition |
|-----------------|---|
| A | Structurally sound with no leakage evident. Slight cracks/defects permitted. |
| B | Cracks and /or fractures observed but pipe provides sufficient arching support. Some leakage may be evident |
| C | Structurally unsound with insufficient arching support. Total collapse/blockage likely in the near future. |

THE CHARTERED INSTITUTE
OF LOSS ADJUSTERS



IDENTIFYING THE NEED FOR REPAIRS: REACTIVE / GENERAL INVESTIGATIONS

UTE



IDENTIFYING THE NEED FOR REPAIRS: SUBSIDENCE INVESTIGATION

UTE



Any questions or
comments?

Your views?

THE CHARTERED INSTITUTE
OF LOSS ADJUSTERS